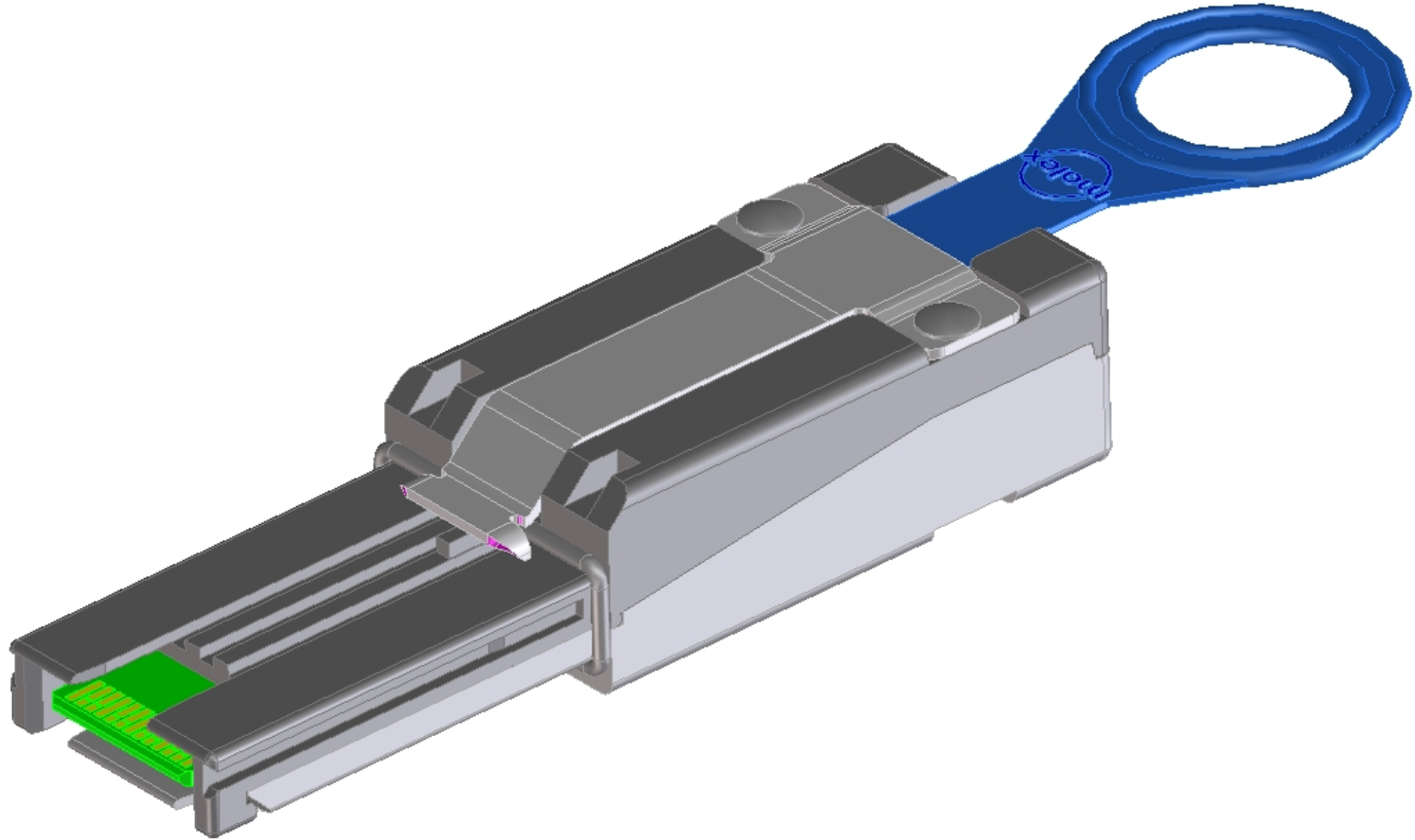


SAS 2.0 Comment Resolution



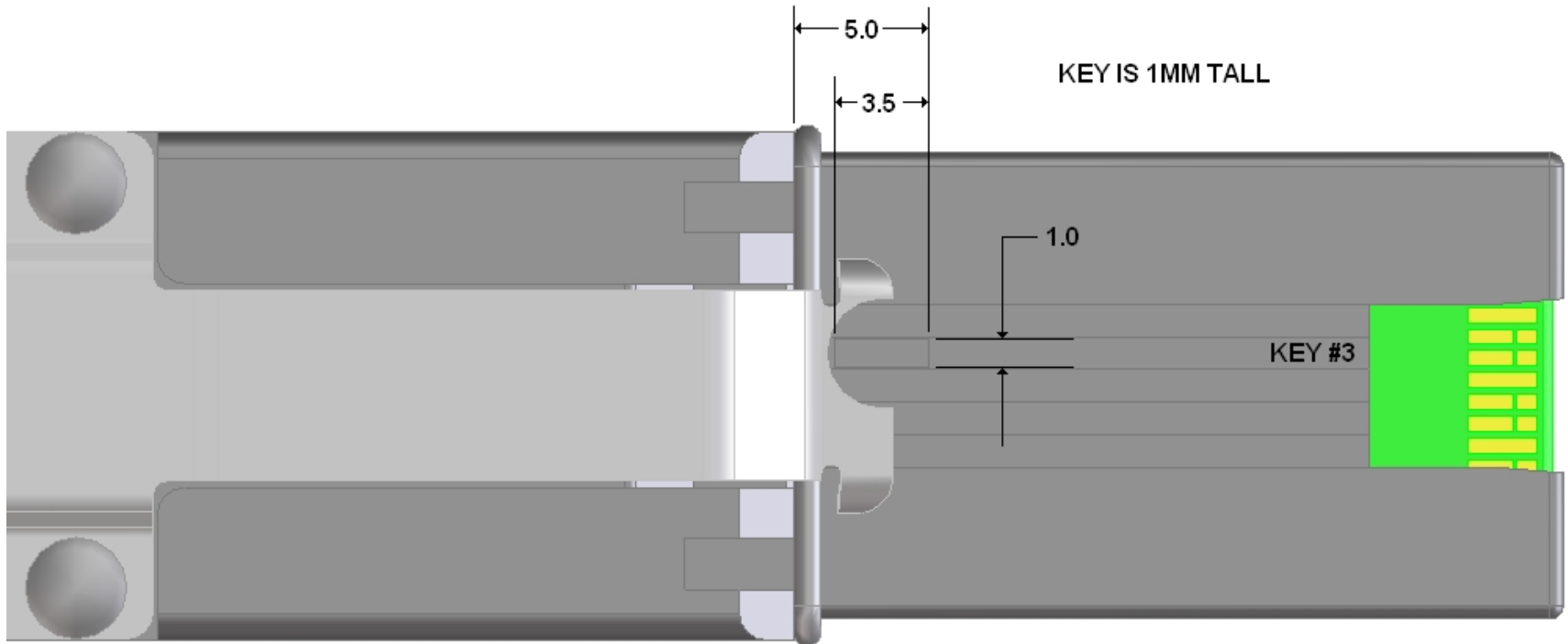
- **Dimensions provided for the addition of a Plug Key & Guide Keyway for Longer Copper Cables for mini SAS 4x (Further name definition required)**
- **Need approval from STA that the addition of a second icon, identical to the current icon be added to the Plug to identify this application**
- **Tolerances for the features described here reside in Table 6-6 and Figure 6-7 of SFF-8088**
- **These features will be added to SFF-8088 Rev 3.x and new figures provided for SAS 2.0 after approval**

SAS 2.0 Plug Key



SAS 2.0 Plug Key

Location & Detail tolerances from SFF-8088 Table 6-6 and Figure 6-7 apply.
This detail will be added to SFF-8088 in Rev 3.1



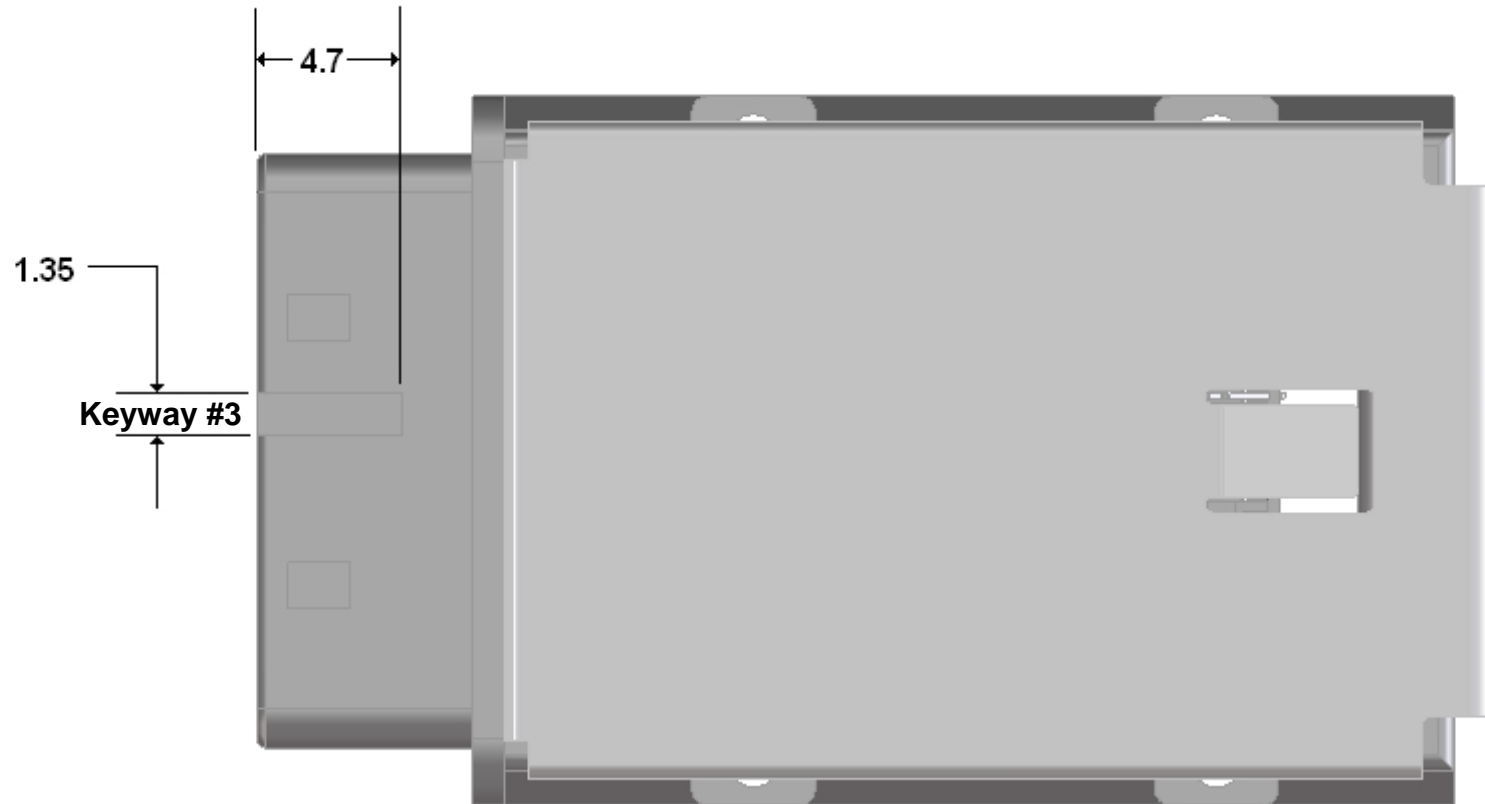
LATCH CUT AWAY FOR VIEWING ACCESS
TOLERANCE = +/-0.1MM

SAS 2.0 Guide Keyway



SAS 2.0 Guide Keyway

Location & Detail tolerances from SFF-8088 Table 6-6 and Figure 6-7 apply.
This detail will be added to SFF-8088 in Rev 3.1



CAGE GASKET REMOVED FOR CLARITY
TOLERANCE = +/-0.1MM