

08-227r0 SAS-2 Stateye v5.080111 1.5 and 3 Gbps results

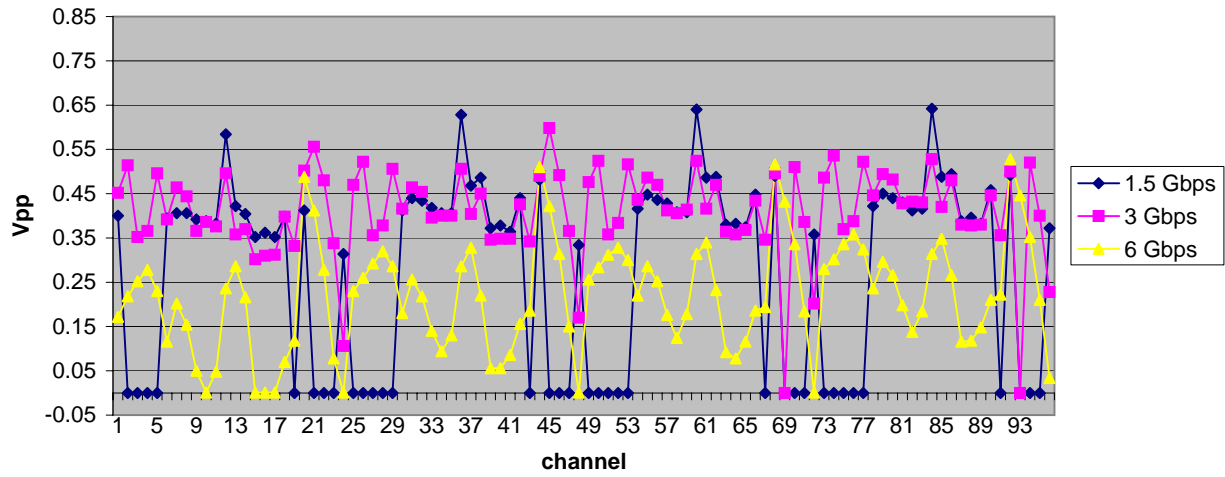
by Rob Elliott

Results at slower physical link rates (1.5 and 3 Gbps) with 0-3 DFE taps.
 All channels with: tx 850 mV, deemp 2, random data. 8b10b usually yields larger eyes.
 Results of "0,1" mean StatEye crashed (usually because the eye is larger than expected)

Channel	1.5 Gbps			3 Gbps			6 Gbps		
	dfe	amp	jitter	dfe	amp	jitter	dfe	amp	jitter
HP01_BtoB_3Connector.s4p_amp0.850_deemp2_dfe0_rand_baud1.5e9	0	0.4	0.33	0	0.45	0.3	0	0.17	0.51
HP02_BtoB_3Connector.s4p_amp0.850_deemp2_dfe0_rand_baud3.0e9	0	0	1	0	0.51	0.36	0	0.22	0.45
HP03_BtoB_3Connector.s4p_amp0.850_deemp2_dfe0_rand_baud3.0e9	0	0	1	0	0.35	0.4	0	0.25	0.39
HP04_BtoB_3Connector.s4p_amp0.850_deemp2_dfe0_rand_baud3.0e9	0	0	1	0	0.37	0.39	0	0.28	0.39
HP05_BtoB_3Connector.s4p_amp0.850_deemp2_dfe0_rand_baud3.0e9	0	0	1	0	0.5	0.35	0	0.23	0.46
HP06_BtoB_3Connector.s4p_amp0.850_deemp2_dfe0_rand_baud1.5e9	0	0.394	0.35	0	0.39	0.31	0	0.12	0.6
HP07_BtoB_3Connector.s4p_amp0.850_deemp2_dfe0_rand_baud1.5e9	0	0.406	0.33	0	0.46	0.28	0	0.2	0.45
HP08_BtoB_3Connector.s4p_amp0.850_deemp2_dfe0_rand_baud1.5e9	0	0.406	0.33	0	0.44	0.29	0	0.15	0.5
HP09_BtoB_4Connector.s4p_amp0.850_deemp2_dfe0_rand_baud1.5e9	0	0.392	0.36	0	0.37	0.34	0	0.05	0.73
HP10_BtoB_4Connector.s4p_amp0.850_deemp2_dfe0_rand_baud1.5e9	0	0.388	0.38	0	0.39	0.35	0	0	0.99
HP11_BtoB_4Connector.s4p_amp0.850_deemp2_dfe0_rand_baud1.5e9	0	0.382	0.36	0	0.38	0.33	0	0.05	0.77
HP12_Brd_1mCable_Bp_Drive.s4p_amp0.850_deemp2_dfe0_rand_baud1.5e9	0	0.584	0.26	0	0.5	0.27	0	0.24	0.42
HP13_Brd_6inCable_Bp_Drive.s4p_amp0.850_deemp2_dfe0_rand_baud1.5e9	0	0.422	0.29	0	0.36	0.39	0	0.29	0.38
HP14_6inCable_Bp_Drive.s4p_amp0.850_deemp2_dfe0_rand_baud1.5e9	0	0.404	0.29	0	0.37	0.36	0	0.22	0.43
HP24_BtoB_4Connector.s4p_amp0.850_deemp2_dfe0_rand_baud1.5e9	0	0.352	0.4	0	0.3	0.41	0	0	0.99
HP25_BtoB_4Connector.s4p_amp0.850_deemp2_dfe0_rand_baud1.5e9	0	0.362	0.38	0	0.31	0.37	0	0	0.99
HP26_BtoB_4Connector.s4p_amp0.850_deemp2_dfe0_rand_baud1.5e9	0	0.352	0.39	0	0.31	0.38	0	0	0.99
HP27_BtoB_3Connector.s4p_amp0.850_deemp2_dfe0_rand_baud1.5e9	0	0.398	0.35	0	0.4	0.31	0	0.07	0.68
HP28_BtoB_3Connector.s4p_amp0.850_deemp2_dfe0_rand_baud3.0e9	0	0	1	0	0.33	0.45	0	0.12	0.54
MiniSAS_0.5meter_A5A6B5B6.s4p_amp0.850_deemp2_dfe0_rand_baud1.5e9	0	0.412	0.99	0	0.5	0.32	0	0.49	0.33
MiniSAS_1meter_A5A6B5B6.s4p_amp0.850_deemp2_dfe0_rand_baud3.0e9	0	0	1	0	0.56	0.26	0	0.41	0.36
MiniSAS_3meter_A5A6B5B6.s4p_amp0.850_deemp2_dfe0_rand_baud3.0e9	0	0	1	0	0.48	0.29	0	0.28	0.47
MiniSAS_6meter_A5A6B5B6.s4p_amp0.850_deemp2_dfe0_rand_baud3.0e9	0	0	1	0	0.34	0.35	0	0.08	0.68
SAS2_transmittertestload.s4p_amp0.850_deemp2_dfe0_rand_baud1.5e9	0	0.314	0.38	0	0.11	0.66	0	0	0.99
HP01_BtoB_3Connector.s4p_amp0.850_deemp2_dfe1_rand_baud3.0e9	1	0	1	1	0.47	0.29	1	0.23	0.48
HP02_BtoB_3Connector.s4p_amp0.850_deemp2_dfe1_rand_baud3.0e9	1	0	1	1	0.52	0.35	1	0.26	0.44
HP03_BtoB_3Connector.s4p_amp0.850_deemp2_dfe1_rand_baud3.0e9	1	0	1	1	0.36	0.39	1	0.29	0.38
HP04_BtoB_3Connector.s4p_amp0.850_deemp2_dfe1_rand_baud3.0e9	1	0	1	1	0.38	0.39	1	0.32	0.37
HP05_BtoB_3Connector.s4p_amp0.850_deemp2_dfe1_rand_baud3.0e9	1	0	1	1	0.51	0.34	1	0.29	0.42
HP06_BtoB_3Connector.s4p_amp0.850_deemp2_dfe1_rand_baud1.5e9	1	0.412	0.35	1	0.42	0.31	1	0.18	0.53
HP07_BtoB_3Connector.s4p_amp0.850_deemp2_dfe1_rand_baud1.5e9	1	0.44	0.31	1	0.46	0.28	1	0.26	0.43
HP08_BtoB_3Connector.s4p_amp0.850_deemp2_dfe1_rand_baud1.5e9	1	0.434	0.32	1	0.45	0.29	1	0.22	0.48
HP09_BtoB_4Connector.s4p_amp0.850_deemp2_dfe1_rand_baud1.5e9	1	0.418	0.35	1	0.4	0.33	1	0.14	0.59
HP10_BtoB_4Connector.s4p_amp0.850_deemp2_dfe1_rand_baud1.5e9	1	0.406	0.38	1	0.4	0.35	1	0.09	0.64
HP11_BtoB_4Connector.s4p_amp0.850_deemp2_dfe1_rand_baud1.5e9	1	0.406	0.34	1	0.4	0.32	1	0.13	0.57
HP12_Brd_1mCable_Bp_Drive.s4p_amp0.850_deemp2_dfe1_rand_baud1.5e9	1	0.628	0.25	1	0.51	0.27	1	0.29	0.41
HP13_Brd_6inCable_Bp_Drive.s4p_amp0.850_deemp2_dfe1_rand_baud1.5e9	1	0.468	0.29	1	0.4	0.36	1	0.33	0.38
HP14_6inCable_Bp_Drive.s4p_amp0.850_deemp2_dfe1_rand_baud1.5e9	1	0.486	0.28	1	0.45	0.33	1	0.22	0.42
HP24_BtoB_4Connector.s4p_amp0.850_deemp2_dfe1_rand_baud1.5e9	1	0.372	0.39	1	0.35	0.38	1	0.06	0.76
HP25_BtoB_4Connector.s4p_amp0.850_deemp2_dfe1_rand_baud1.5e9	1	0.378	0.38	1	0.35	0.35	1	0.06	0.75
HP26_BtoB_4Connector.s4p_amp0.850_deemp2_dfe1_rand_baud1.5e9	1	0.364	0.38	1	0.35	0.36	1	0.09	0.69
HP27_BtoB_3Connector.s4p_amp0.850_deemp2_dfe1_rand_baud1.5e9	1	0.44	0.33	1	0.43	0.3	1	0.16	0.55
HP28_BtoB_3Connector.s4p_amp0.850_deemp2_dfe1_rand_baud3.0e9	1	0	1	1	0.34	0.45	1	0.19	0.47
MiniSAS_0.5meter_A5A6B5B6.s4p_amp0.850_deemp2_dfe1_rand_baud1.5e9	1	0.482	0.99	1	0.49	0.3	1	0.51	0.32
MiniSAS_1meter_A5A6B5B6.s4p_amp0.850_deemp2_dfe1_rand_baud3.0e9	1	0	1	1	0.6	0.25	1	0.42	0.35
MiniSAS_3meter_A5A6B5B6.s4p_amp0.850_deemp2_dfe1_rand_baud3.0e9	1	0	1	1	0.49	0.28	1	0.31	0.43
MiniSAS_6meter_A5A6B5B6.s4p_amp0.850_deemp2_dfe1_rand_baud3.0e9	1	0	1	1	0.37	0.33	1	0.15	0.57
SAS2_transmittertestload.s4p_amp0.850_deemp2_dfe1_rand_baud1.5e9	1	0.334	0.35	1	0.17	0.5	1	0	0.99
HP01_BtoB_3Connector.s4p_amp0.850_deemp2_dfe2_rand_baud3.0e9	2	0	1	2	0.48	0.29	2	0.26	0.43
HP02_BtoB_3Connector.s4p_amp0.850_deemp2_dfe2_rand_baud3.0e9	2	0	1	2	0.52	0.35	2	0.28	0.4
HP03_BtoB_3Connector.s4p_amp0.850_deemp2_dfe2_rand_baud3.0e9	2	0	1	2	0.36	0.39	2	0.31	0.37
HP04_BtoB_3Connector.s4p_amp0.850_deemp2_dfe2_rand_baud3.0e9	2	0	1	2	0.38	0.39	2	0.33	0.37
HP05_BtoB_3Connector.s4p_amp0.850_deemp2_dfe2_rand_baud3.0e9	2	0	1	2	0.52	0.35	2	0.3	0.4
HP06_BtoB_3Connector.s4p_amp0.850_deemp2_dfe2_rand_baud1.5e9	2	0.416	0.34	2	0.44	0.31	2	0.22	0.44
HP07_BtoB_3Connector.s4p_amp0.850_deemp2_dfe2_rand_baud1.5e9	2	0.448	0.31	2	0.49	0.28	2	0.29	0.4
HP08_BtoB_3Connector.s4p_amp0.850_deemp2_dfe2_rand_baud1.5e9	2	0.436	0.32	2	0.47	0.28	2	0.25	0.41
HP09_BtoB_4Connector.s4p_amp0.850_deemp2_dfe2_rand_baud1.5e9	2	0.428	0.35	2	0.41	0.31	2	0.18	0.51

HP10_BtoB_4Connector.s4p_amp0.850_deemp2_dfe2_rand_baud1.5e9	2	0.408	0.38	2	0.41	0.34	2	0.12	0.55
HP11_BtoB_4Connector.s4p_amp0.850_deemp2_dfe2_rand_baud1.5e9	2	0.408	0.35	2	0.41	0.32	2	0.18	0.5
HP12_Brd_1mCable_Bp_Drive.s4p_amp0.850_deemp2_dfe2_rand_baud1.5e9	2	0.64	0.25	2	0.52	0.27	2	0.31	0.39
HP13_Brd_6inCable_Bp_Drive.s4p_amp0.850_deemp2_dfe2_rand_baud1.5e9	2	0.486	0.28	2	0.42	0.36	2	0.34	0.35
HP14_6inCable_Bp_Drive.s4p_amp0.850_deemp2_dfe2_rand_baud1.5e9	2	0.488	0.28	2	0.47	0.33	2	0.23	0.42
HP24_BtoB_4Connector.s4p_amp0.850_deemp2_dfe2_rand_baud1.5e9	2	0.38	0.37	2	0.36	0.34	2	0.09	0.66
HP25_BtoB_4Connector.s4p_amp0.850_deemp2_dfe2_rand_baud1.5e9	2	0.382	0.37	2	0.36	0.35	2	0.08	0.67
HP26_BtoB_4Connector.s4p_amp0.850_deemp2_dfe2_rand_baud1.5e9	2	0.374	0.37	2	0.37	0.34	2	0.12	0.62
HP27_BtoB_3Connector.s4p_amp0.850_deemp2_dfe2_rand_baud1.5e9	2	0.448	0.33	2	0.43	0.3	2	0.19	0.49
HP28_BtoB_3Connector.s4p_amp0.850_deemp2_dfe2_rand_baud3.0e9	2	0	1	2	0.35	0.43	2	0.19	0.45
MiniSAS_0.5meter_A5A6B5B6.s4p_amp0.850_deemp2_dfe2_rand_baud1.5e9	2	0.49	0.99	2	0.5	0.3	2	0.52	0.3
MiniSAS_1meter_A5A6B5B6.s4p_amp0.850_deemp2_dfe2_rand_baud6.0e9	2	0	1		0	1	2	0.43	0.34
MiniSAS_3meter_A5A6B5B6.s4p_amp0.850_deemp2_dfe2_rand_baud6.0e9	2	0	1	2	0.51	0.27	2	0.34	0.39
MiniSAS_6meter_A5A6B5B6.s4p_amp0.850_deemp2_dfe2_rand_baud6.0e9	2	0	1	2	0.39	0.32	2	0.18	0.5
SAS2_transmittertestload.s4p_amp0.850_deemp2_dfe2_rand_baud1.5e9	2	0.358	0.33	2	0.2	0.43	2	0	0.99
HP01_BtoB_3Connector.s4p_amp0.850_deemp2_dfe3_rand_baud3.0e9	3	0	1	3	0.49	0.29	3	0.28	0.39
HP02_BtoB_3Connector.s4p_amp0.850_deemp2_dfe3_rand_baud3.0e9	3	0	1	3	0.54	0.34	3	0.3	0.38
HP03_BtoB_3Connector.s4p_amp0.850_deemp2_dfe3_rand_baud3.0e9	3	0	1	3	0.37	0.39	3	0.34	0.34
HP04_BtoB_3Connector.s4p_amp0.850_deemp2_dfe3_rand_baud3.0e9	3	0	1	3	0.39	0.39	3	0.36	0.35
HP05_BtoB_3Connector.s4p_amp0.850_deemp2_dfe3_rand_baud3.0e9	3	0	1	3	0.52	0.34	3	0.32	0.37
HP06_BtoB_3Connector.s4p_amp0.850_deemp2_dfe3_rand_baud1.5e9	3	0.422	0.34	3	0.45	0.29	3	0.24	0.41
HP07_BtoB_3Connector.s4p_amp0.850_deemp2_dfe3_rand_baud1.5e9	3	0.45	0.32	3	0.49	0.28	3	0.3	0.38
HP08_BtoB_3Connector.s4p_amp0.850_deemp2_dfe3_rand_baud1.5e9	3	0.44	0.32	3	0.48	0.29	3	0.27	0.39
HP09_BtoB_4Connector.s4p_amp0.850_deemp2_dfe3_rand_baud1.5e9	3	0.43	0.35	3	0.43	0.3	3	0.2	0.47
HP10_BtoB_4Connector.s4p_amp0.850_deemp2_dfe3_rand_baud1.5e9	3	0.412	0.37	3	0.43	0.33	3	0.14	0.53
HP11_BtoB_4Connector.s4p_amp0.850_deemp2_dfe3_rand_baud1.5e9	3	0.416	0.34	3	0.43	0.3	3	0.18	0.48
HP12_Brd_1mCable_Bp_Drive.s4p_amp0.850_deemp2_dfe3_rand_baud1.5e9	3	0.642	0.25	3	0.53	0.27	3	0.31	0.39
HP13_Brd_6inCable_Bp_Drive.s4p_amp0.850_deemp2_dfe3_rand_baud1.5e9	3	0.488	0.28	3	0.42	0.35	3	0.35	0.35
HP14_6inCable_Bp_Drive.s4p_amp0.850_deemp2_dfe3_rand_baud1.5e9	3	0.494	0.28	3	0.48	0.32	3	0.27	0.38
HP24_BtoB_4Connector.s4p_amp0.850_deemp2_dfe3_rand_baud1.5e9	3	0.388	0.37	3	0.38	0.33	3	0.12	0.58
HP25_BtoB_4Connector.s4p_amp0.850_deemp2_dfe3_rand_baud1.5e9	3	0.396	0.37	3	0.38	0.33	3	0.12	0.55
HP26_BtoB_4Connector.s4p_amp0.850_deemp2_dfe3_rand_baud1.5e9	3	0.382	0.37	3	0.38	0.33	3	0.15	0.55
HP27_BtoB_3Connector.s4p_amp0.850_deemp2_dfe3_rand_baud1.5e9	3	0.458	0.33	3	0.45	0.29	3	0.21	0.44
HP28_BtoB_3Connector.s4p_amp0.850_deemp2_dfe3_rand_baud3.0e9	3	0	1	3	0.36	0.43	3	0.22	0.4
MiniSAS_0.5meter_A5A6B5B6.s4p_amp0.850_deemp2_dfe3_rand_baud1.5e9	3	0.492	0.99	3	0.5	0.29	3	0.53	0.3
MiniSAS_1meter_A5A6B5B6.s4p_amp0.850_deemp2_dfe3_rand_baud6.0e9	3	0	1	3	0	1	3	0.45	0.33
MiniSAS_3meter_A5A6B5B6.s4p_amp0.850_deemp2_dfe3_rand_baud6.0e9	3	0	1	3	0.52	0.28	3	0.35	0.37
MiniSAS_6meter_A5A6B5B6.s4p_amp0.850_deemp2_dfe3_rand_baud6.0e9	3	0	1	3	0.4	0.31	3	0.21	0.45
SAS2_transmittertestload.s4p_amp0.850_deemp2_dfe3_rand_baud1.5e9	3	0.372	0.32	3	0.23	0.4	3	0.03	0.74

dfe0, 1, 2, 3 amplitude (0=closed, goal is 0.1 V or more)



dfe0, 1, 2, 3 jitter (1=no eye, goal is 0.60 UI or less)

