

Date: July 06, 2007

To: T10 Committee (SCSI)

From: George Penokie (IBM)

Subject: SAS-2: Transport layer write flowcharts

### 1 Overview

This is a proposal that takes a detailed look at the write data path. In this revision only the target side write flow charts are shown. The flow charts reflect the wording as stated SAS-2 revision 10.

### 2 ST\_TTS transport layer write data flowcharts

Requested Write Data Length = Amount of write data requested by the device server from the application client buffer  
Requested Write Data Offset = Device server requested offset in the application client buffer for write data  
Data-Out Request Byte Count = The number of bytes requested to be transferred. Set by the device server.

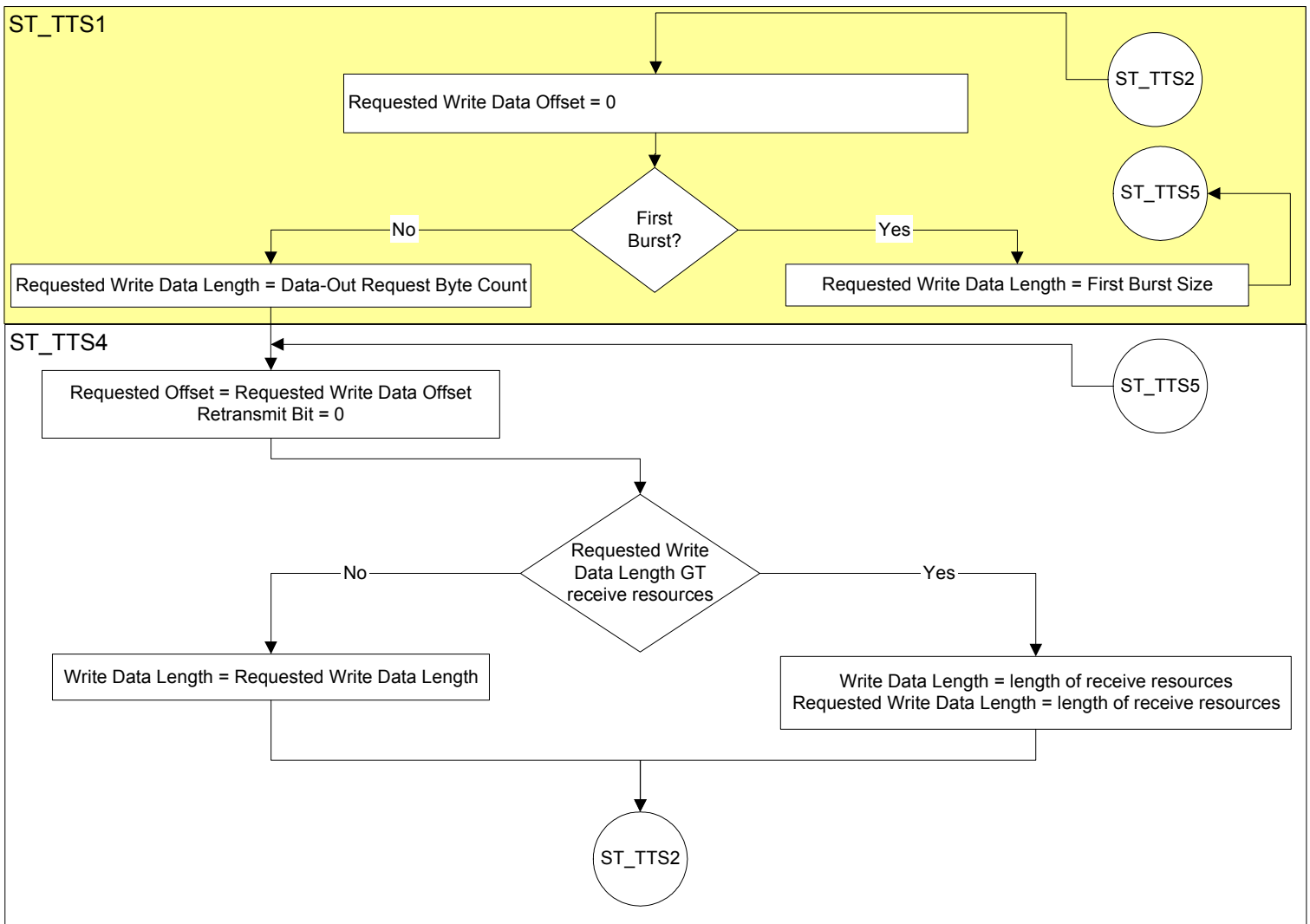


Figure 1 — Representation of transport layer (i.e., ST\_TTS1 and ST\_TTS4) write data operation

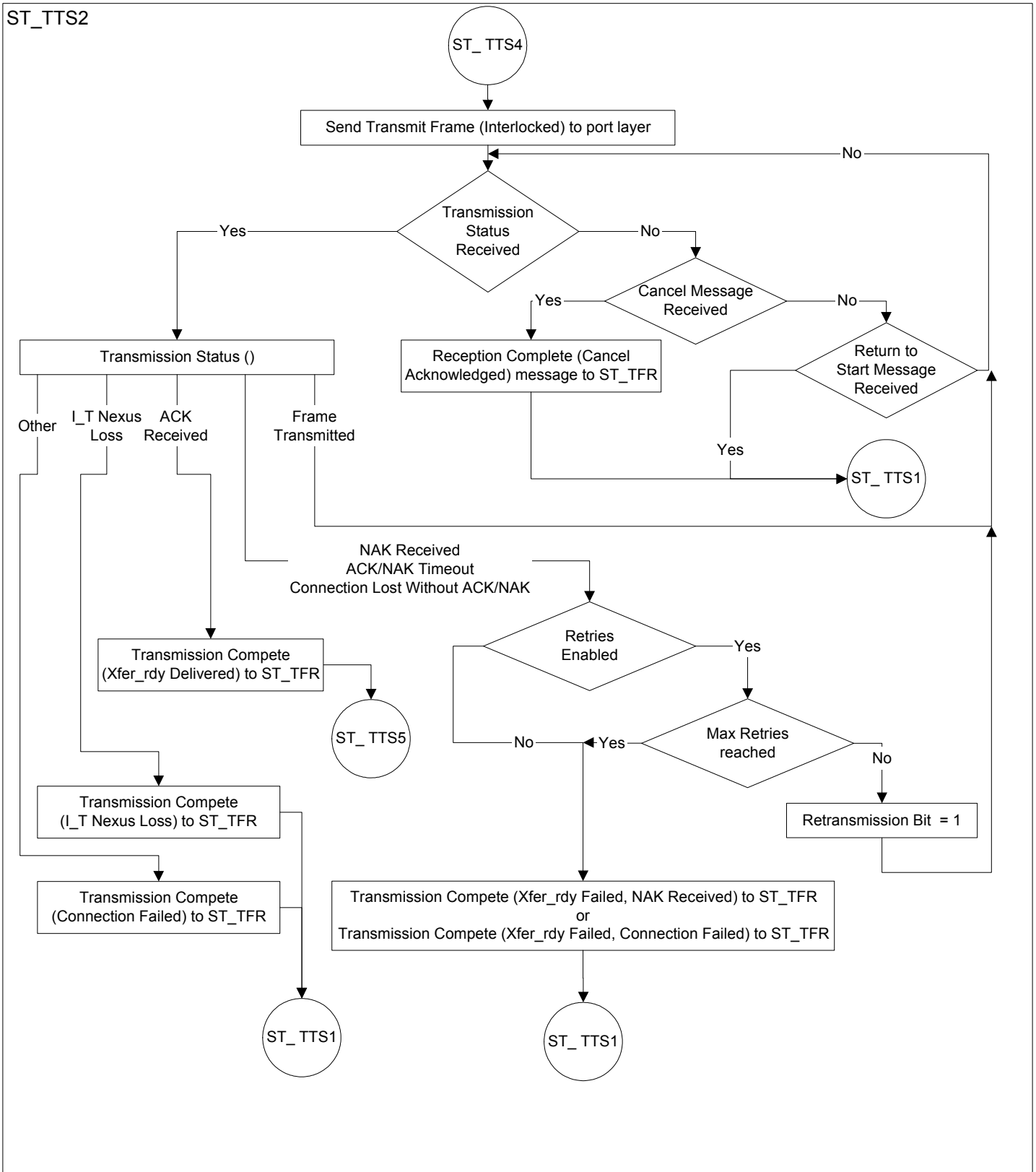


Figure 2 — Representation of transport layer (i.e., ST\_TTS2) write data operation

Data Offset = Offset into application client read data buffer and the device server read data buffer  
 Requested Write Data Length = Amount of write data requested by the device server from the application client buffer  
 Requested Write Data Offset = Device server requested offset in the application client buffer for write data  
 Data-Out Request Byte Count = The number of bytes requested to be transferred. Set by the device server.  
 Write Data Received = The number of write bytes that have been successfully received.  
 Bytes transferred = The number of bytes in the last write Data information unit that was received.

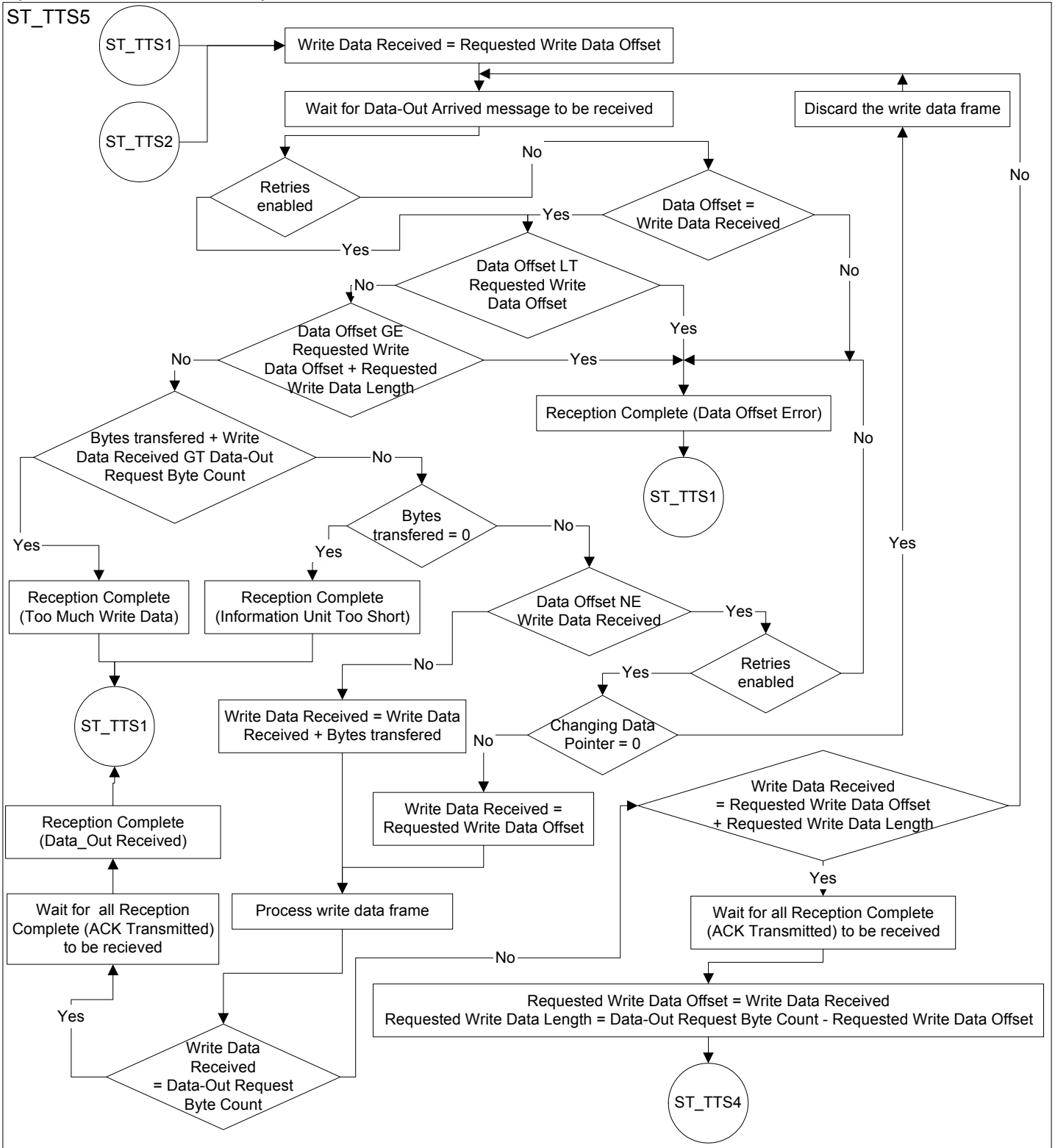


Figure 3 — Representation of transport layer (i.e., ST\_TTS5) write data operation