

Date: 9/13/04

To: T10 Committee (SCSI)

From: George Penokie (IBM/Tivoli)

Subject: SAS UML Corrections

4 General

4.1 Architecture

4.1.1 Architecture overview

....

Figure 6 shows the class diagram for a SAS domain, showing the relationships between SAS domain, SCSI domain, service delivery subsystem, expander device, expander port, SAS device, SCSI device, SAS port, SCSI port, and phy classes. Relationships to ATA classes (e.g., ATA domain) are not shown in figure 6.

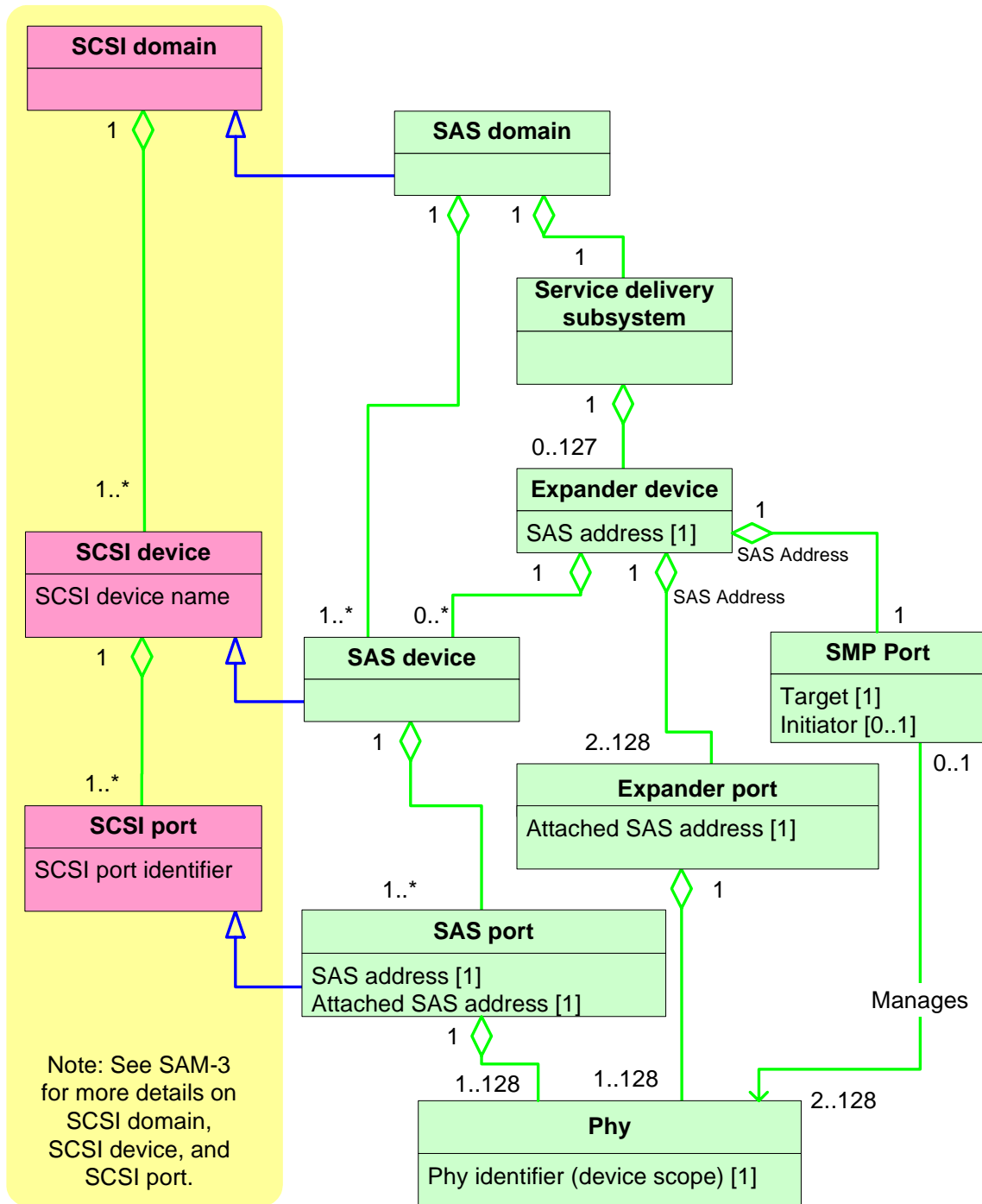


Figure 6 — SAS domain class diagram

4.1.2 Physical links and phys

...

Figure 7 expands the phy class showing the relationships between the following classes:

- a) phy;
- b) SAS phy;
- c) SAS phy;

- d) SAS initiator phy;
- e) SAS target phy;
- f) SSP phy;
- g) STP phy;
- h) SMP phy; and
- i) expander phy.

SATA phys are also referenced in this standard but are defined by SATA (see ATA/ATAPI-7 V3).

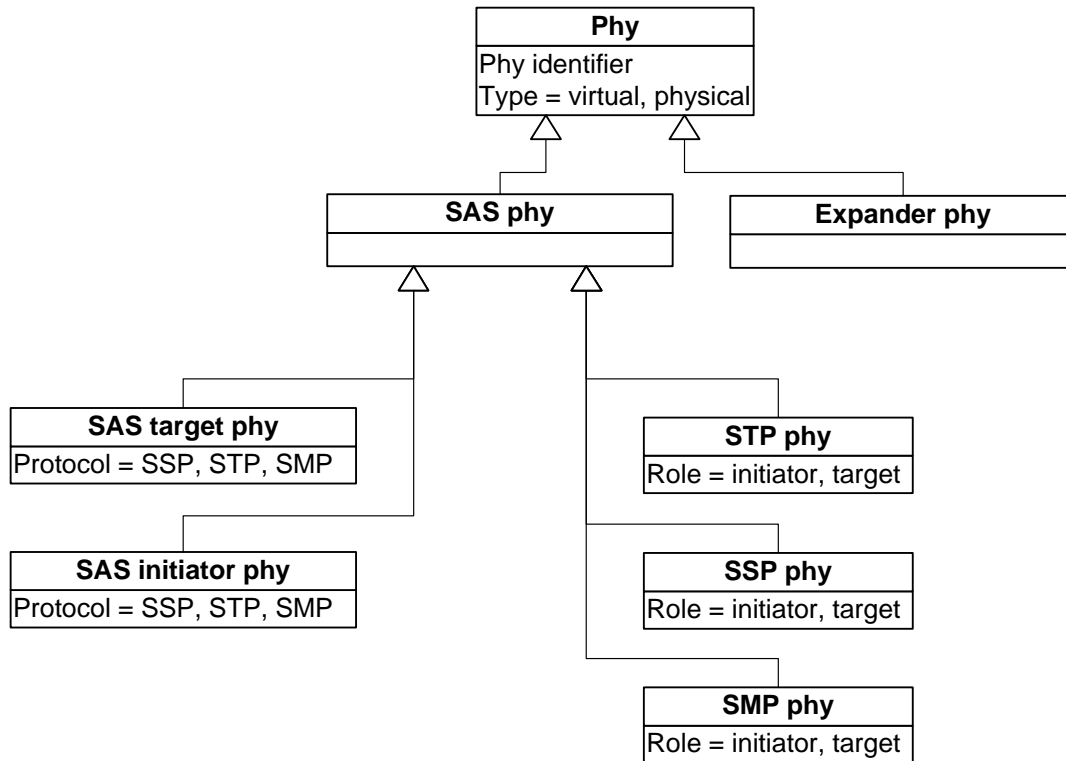


Figure 7 — Phy classes

Figure 8 shows the objects that are instances of the:

- a) SAS phy class (i.e., SSP initiator phy, SSP target phy, virtual SSP target phy, virtual SSP initiator phy, STP initiator phy, STP target phy, virtual STP target phy, virtual STP initiator phy, SMP initiator phy, SMP target phy, virtual SMP target phy, and virtual SMP virtual initiator phy); and
- b) expander phy class (i.e., expander phy and virtual expander phy).

The objects of the SAS phy class shown in figure 8 are only valid and unchangeable during a connection. A different object may be used on a different connection.

Valid objects for the expander phy class

<u>Expander phy : Expander phy</u>
Phy identifier
Type = physical

<u>Virtual expander phy : Expander phy</u>
Phy identifier
Type = Virtual

Valid objects for the SAS phy class

<u>SSP initiator phy : SAS phy</u>
Phy identifier
Type = physical
Role = initiator
Protocol = SSP

<u>SSP target phy : SAS phy</u>
Phy identifier
Type = physical
Role = target
Protocol = SSP

<u>STP initiator phy : SAS phy</u>
Phy identifier
Type = physical
Role = initiator
Protocol = STP

<u>STP target phy : SAS phy</u>
Phy identifier
Type = physical
Role = target
Protocol = STP

<u>SMP initiator phy : SAS phy</u>
Phy identifier
Type = physical
Role = initiator
Protocol = SMP

<u>SMP target phy : SAS phy</u>
Phy identifier
Type = physical
Role = target
Protocol = SMP

<u>Virtual SMP initiator phy : SAS phy</u>
Phy identifier
Type = virtual
Role = initiator
Protocol = SMP

<u>Virtual SMP target phy : SAS phy</u>
Phy identifier
Type = virtual
Role = target
Protocol = SMP

<u>Virtual STP initiator phy : SAS phy</u>
Phy identifier
Type = virtual
Role = initiator
Protocol = STP

<u>Virtual STP target phy : SAS phy</u>
Phy identifier
Type = virtual
Role = target
Protocol = STP

<u>Virtual SSP initiator phy : SAS phy</u>
Phy identifier
Type = virtual
Role = initiator
Protocol = SSP

<u>Virtual SSP target phy : SAS phy</u>
Phy identifier
Type = virtual
Role = target
Protocol = SSP

Figure 8 — Phy objects

4.1.3 Ports (narrow ports and wide ports)

...

Figure 9 expands the port class and expander class to show the relationships between the following classes:

- a) port;
- b) expander device;
- c) expander port;
- d) SAS port;
- e) SAS target port;
- f) SAS initiator port;
- g) STP port;
- h) SSP port; and
- i) SMP port.

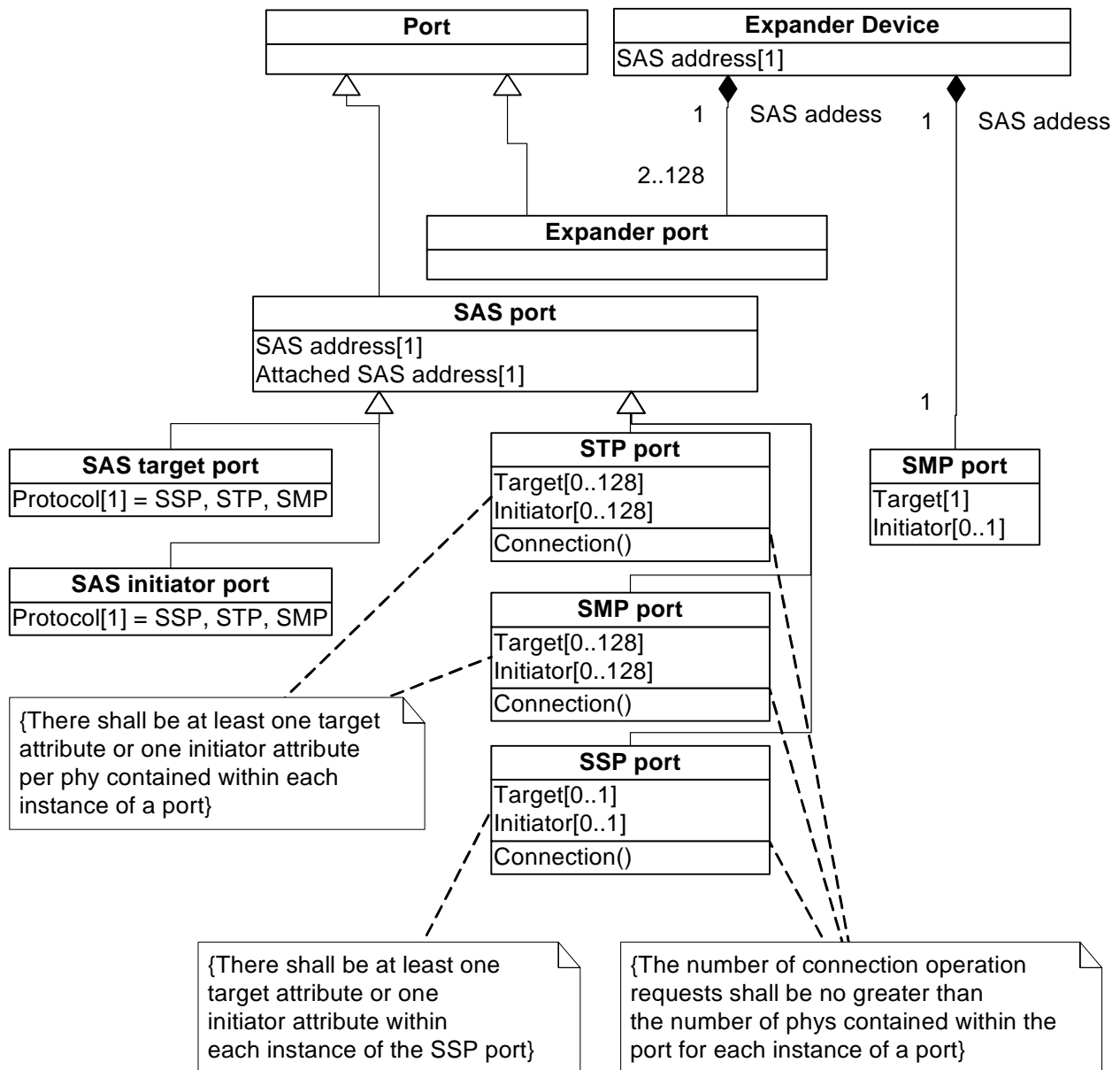


Figure 9 — Port classes

Figure 10 shows the objects that are instances of the:

- a) SAS target port class (i.e., SSP target port, STP target port, SMP target port);

- b) SAS initiator port class (i.e., SSP initiator port, STP initiator port, SMP initiator port);
- c) STP port class (i.e., STP initiator port, STP target port, STP port);
- d) SMP port class (i.e., SMP initiator port, SMP target port, SMP port);
- e) SSP port class (i.e., SSP initiator port, SSP target port, SSP port);
- f) expander device SMP port class (i.e., SMP target port, SMP port); and
- g) expander port class (i.e., expander port).

The objects of the SAS port class are shown in figure 10. A different object may be used on a different connection.

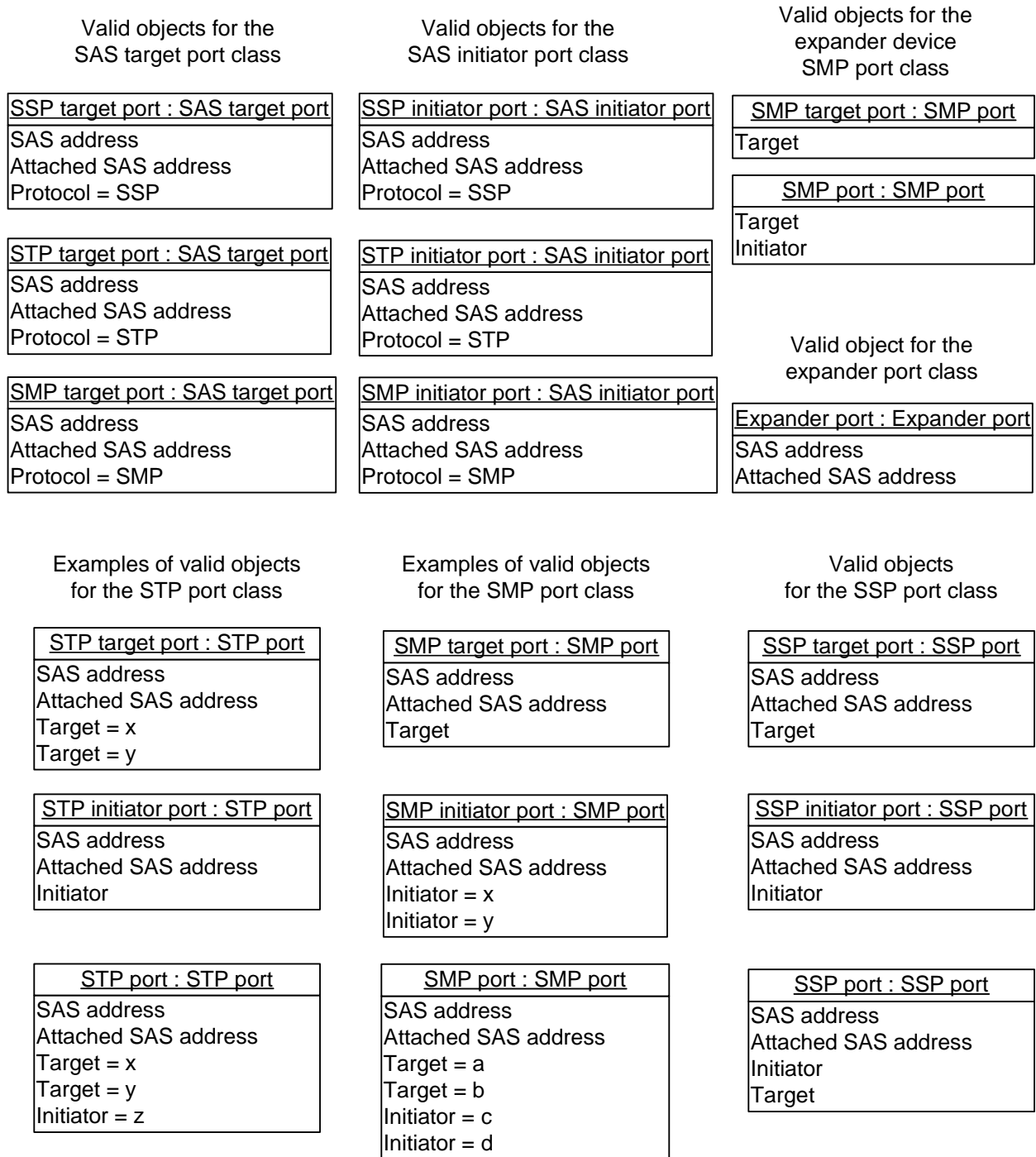


Figure 10 — Port objects

4.1.4 SAS devices

4.1.5 Expander devices (edge expander devices and fanout expander devices)

...

Figure 11 shows the expander device classes.

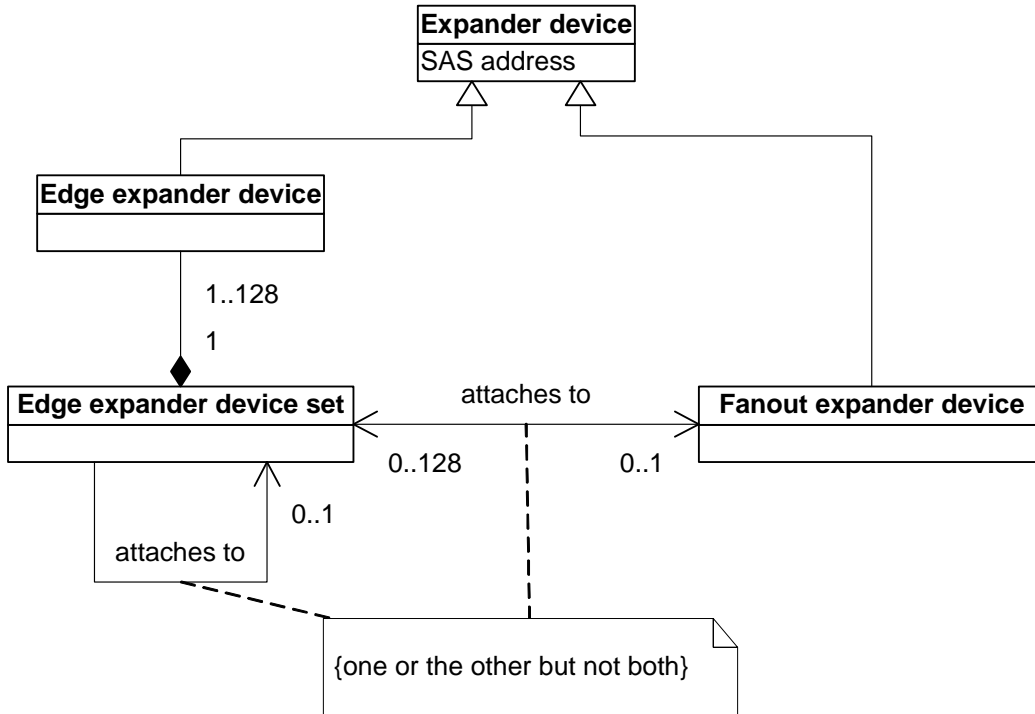


Figure 11 — Expander device classes

...

4.1.6 Service delivery subsystem

....

4.1.7 Domains

...

4.1.8 Expander device topologies

4.1.8.1 Expander device topology overview

...

4.1.8.2 Edge expander device set

...

4.1.8.3 Expander device topologies

....

4.1.9 Pathways

...

4.1.10 Connections

| ...

4.2 Names and identifiers

4.2.1 Names and identifiers overview

| ...

4.2.2 SAS addresses

|

4.2.3 Hashed SAS address

| ...

4.2.4 Device names

4.2.5 Port names

| ...

4.2.6 Port identifiers

| ...

4.2.7 Phy identifiers

| ...

4.3 State machines

4.3.1 State machine overview

Figure 12 shows the state machines for SAS devices, their relationships to each other and to the SAS device, SAS port, and SAS phy.

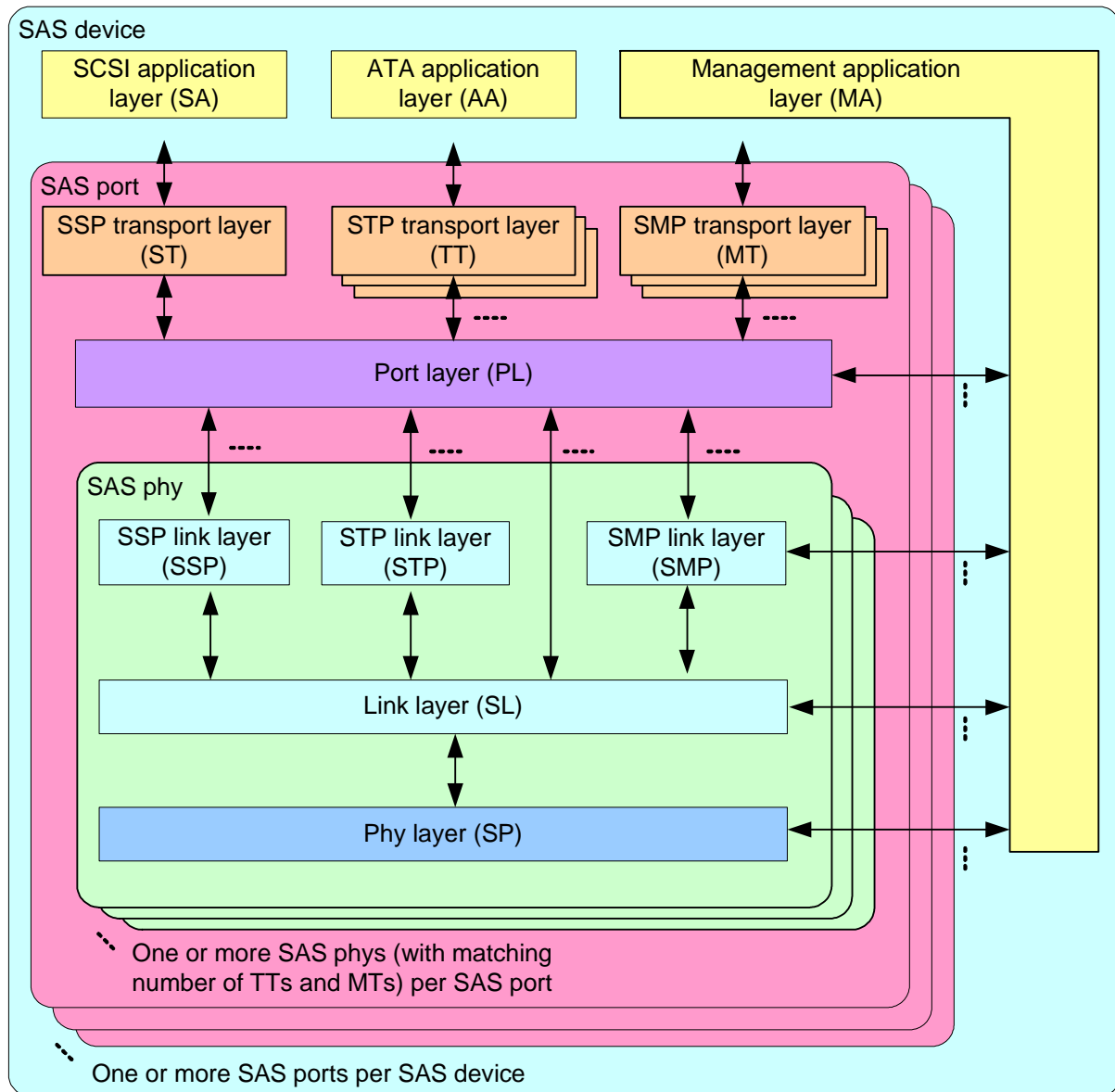


Figure 12 — State machines for SAS devices

Figure 13 shows the state machines for expander devices, their relationships to each other and to the expander device, expander port, and expander phy. Expander function state machines are not defined in this standard, but the interface to the expander function is defined in 4.6.6.

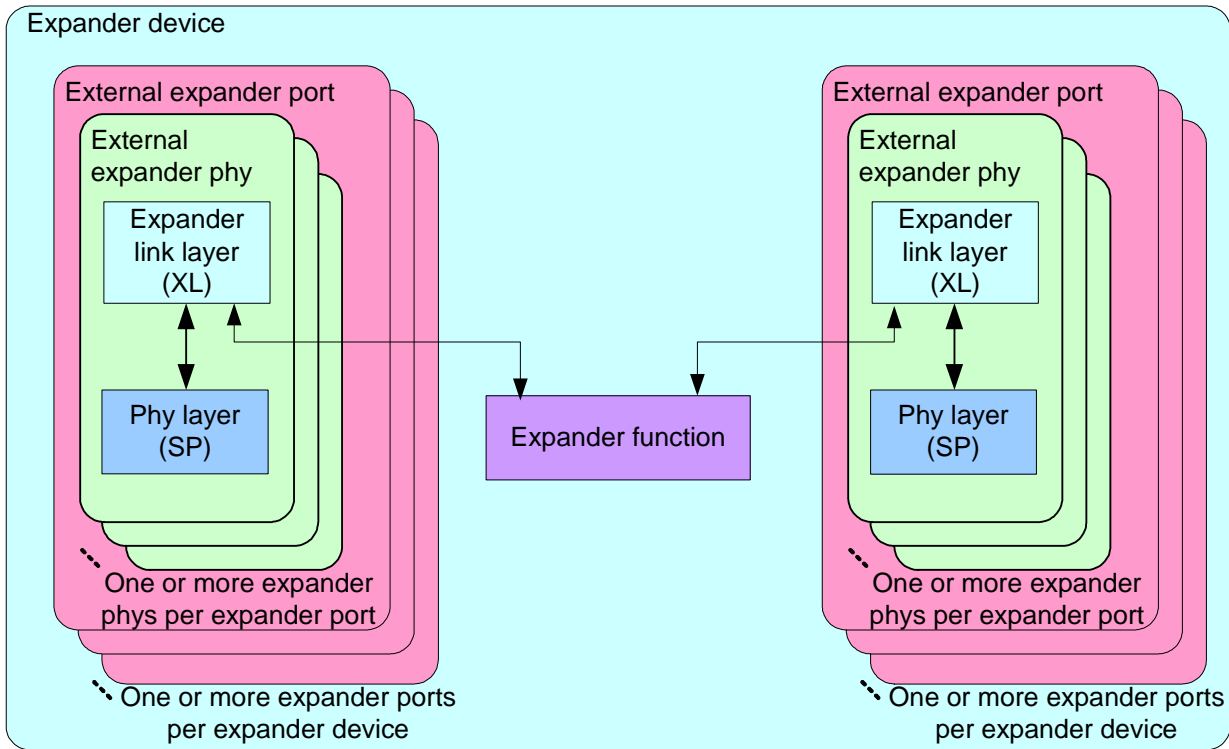


Figure 13 — State machines for expander devices

Annex I contains a list of messages between state machines.

4.3.2 Transmit data path

...

4.3.3 State machines and SAS device, SAS port, and SAS phy objects

Figure 14 shows which state machines are contained within the SAS device, SAS port, and SAS phy classes.

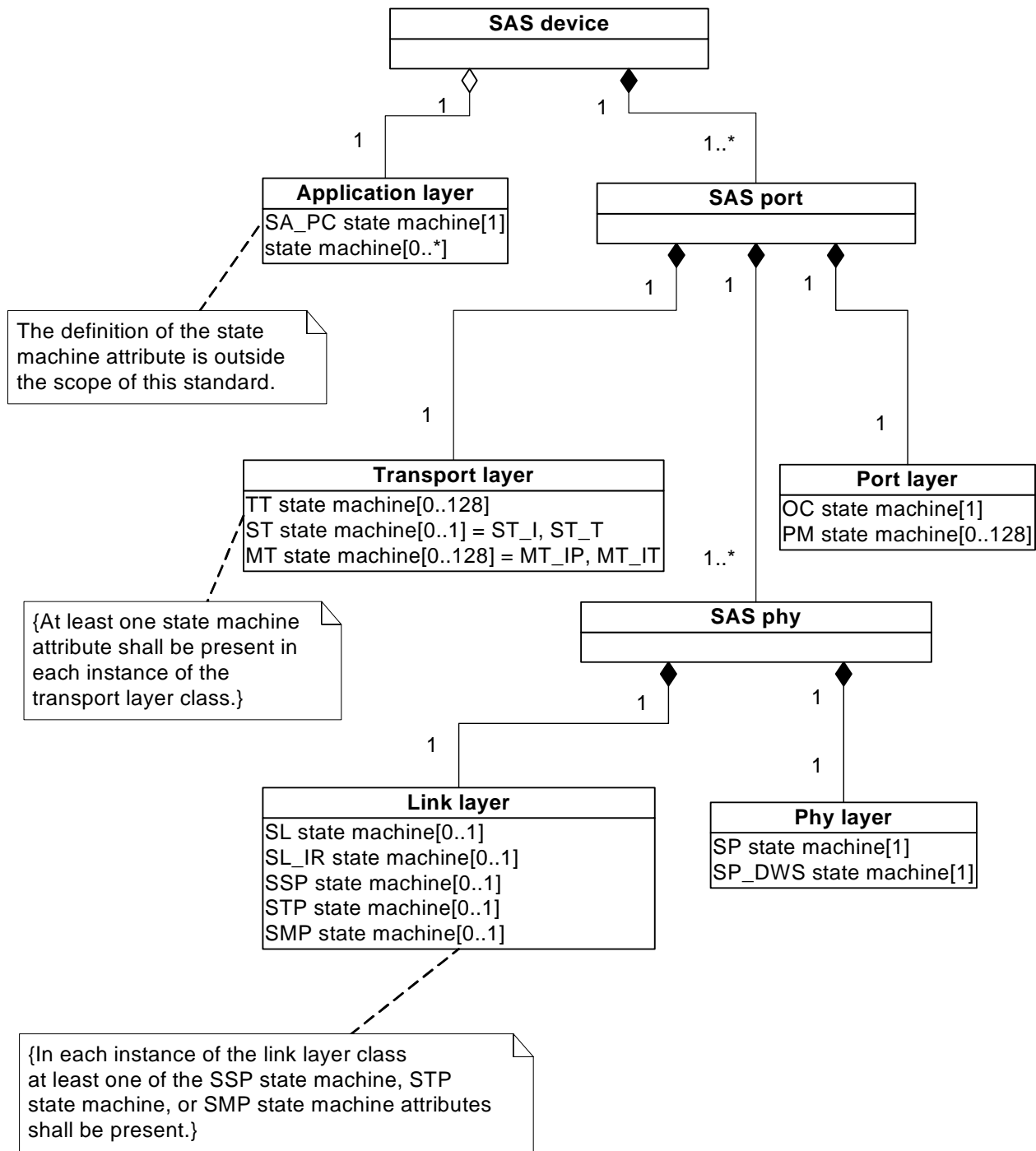


Figure 14 — State machine and SAS device, SAS port, and SAS phy classes

Figure 15 shows which state machines are contained within the expander device, expander port, and expander phy classes.

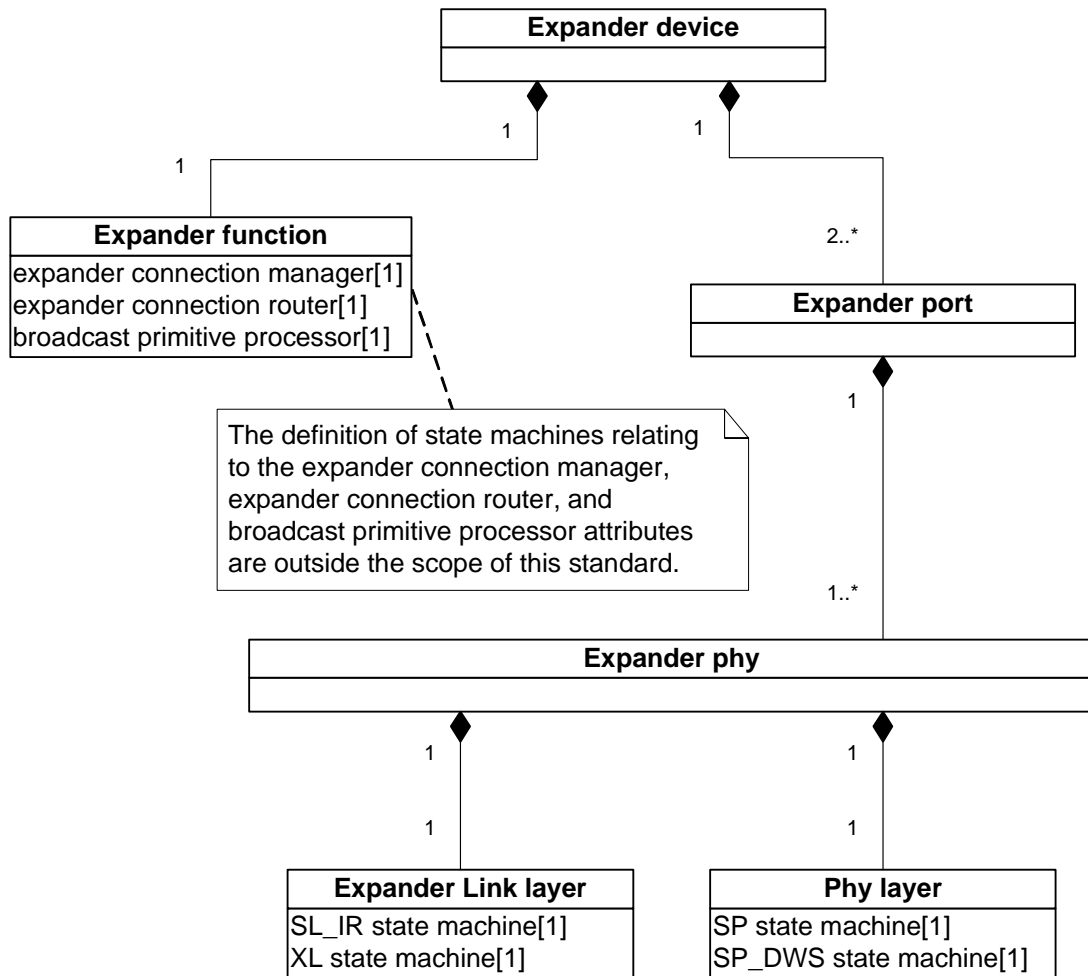


Figure 15 — State machine and expander device, expander port, and expander phy classes