

T10 02 – 276r2 SAS Combined Request-Confirmation List

<u>← Requests</u>		<u>← Requests</u>	
SAS	Open Connection	Port	
Link	Stop Arb	layer	Cancel
layer	Accept_Reject Opens (Reject)	PL	Accept_Reject Opens (Reject)
SL	Accept_Reject Opens (Accept)	for	
		SSP	Accept_Reject Opens (Accept)
			SSP
			Transport
			layer
			ST

<u>Confirmations →</u>		<u>Confirmations →</u>	
SAS		Port	Cancel Acknowledge
link		layer	Transmission Status (Open Failed - Wrong Destination)
layer	Open Failed (Wrong Destination)	PL	Transmission Status (Open Failed - Link Rate Not Supported)
SL	Open Failed (Link Rate Not Supported)	for	Transmission Status (Open Failed - Protocol Not Supported)
	Open Failed (Protocol Not Supported)	SSP	Transmission Status (Open Failed - No Destination)
	Open Failed (Retry)		Transmission Status (Open Failed - Bad Destination)
	Open Failed (Pathway Blocked)		Transmission Status (Open Failed - STP Resources Busy)
	Open Failed (No Destination)		Transmission Status (Open Failed - Open Timeout Occurred)
	Open Failed (Bad Destination)		Transmission Status (Open Failed - Break Received)
	Open Failed (STP Resources Busy)		Transmission Status (Open Failed - I_T Nexus Loss Timeout)
	Open Failed (Port Layer Request)		
	Open Failed (Open Timeout Occurred)		
	Open Failed (Break Received)		
	Connection Opened (By SSP Source)		
	Connection Opened (By STP Source)		
	Connection Opened (By SMP Source)		
	Connection Opened (By SSP Destination)		
	Connection Opened (By STP Destination)		
	Connection Opened (By SMP Destination)		

T10 02 – 276r2 SAS Combined Request-Confirmation List

	Connection Closed (Break Received)		Connection Closed (Break Received)	
	Connection Closed (Normal)			
	Connection Closed (Close Timeout)		Connection Closed (Close Timeout)	
	Connection Closed (Link Broken)		Connection Closed (Link Broken)	

← Requests

SAS SSP Link layer SP		Port layer PL for SSP	Transmit Frame (Interlocked)	SSP Transport layer ST
			Transmit Frame (Non - Interlocked)	
	Tx Frame (Balance Required)			
	Tx Frame (Balance Not Required)			
	Close Connection			

← Requests

Confirmations →

SAS SSP Link layer SP	Frame Transmitted	Port layer PL for SSP	Transmission Status (Frame Transmitted)	SSP Transport layer ST
	ACK/NAK Timeout		ACK/NAK Timeout:	
	Credit Timeout		Transmission Status (Credit Timeout)	
	DONE Transmitted			
	DONE Timeout			
	ACK Received		ACK Received	
	NAK Received		NAK Received	
	Done Received (ACK/NAK Timeout)			
	Frame Received (ACK/NAK Balanced)		Frame Received (ACK/NAK Balanced)	
	Frame Received (ACK/NAK Not Balanced)		Frame Received (ACK/NAK Not Balanced)	
			Transmission Status (Connection Lost)	

Confirmations →

← Requests

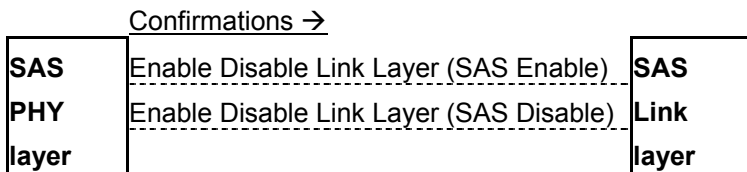
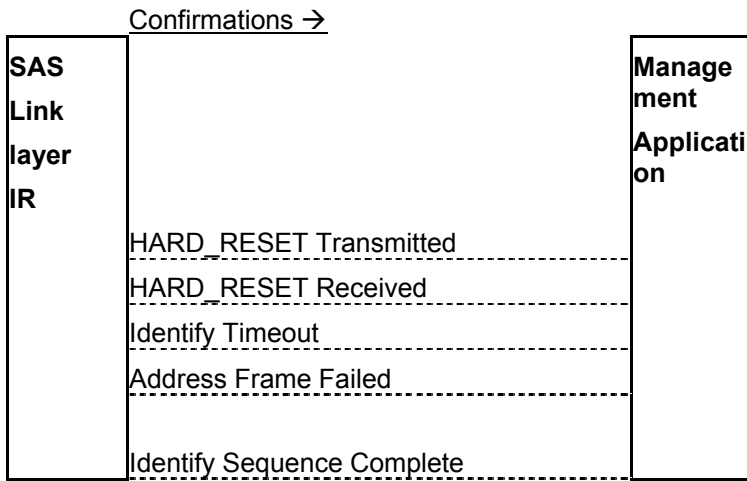
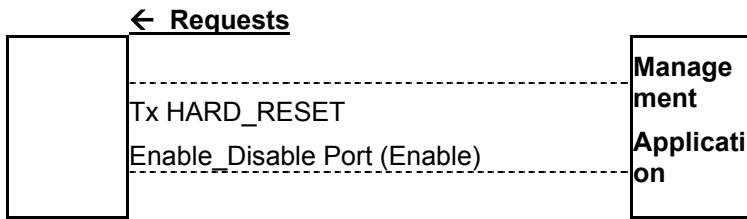
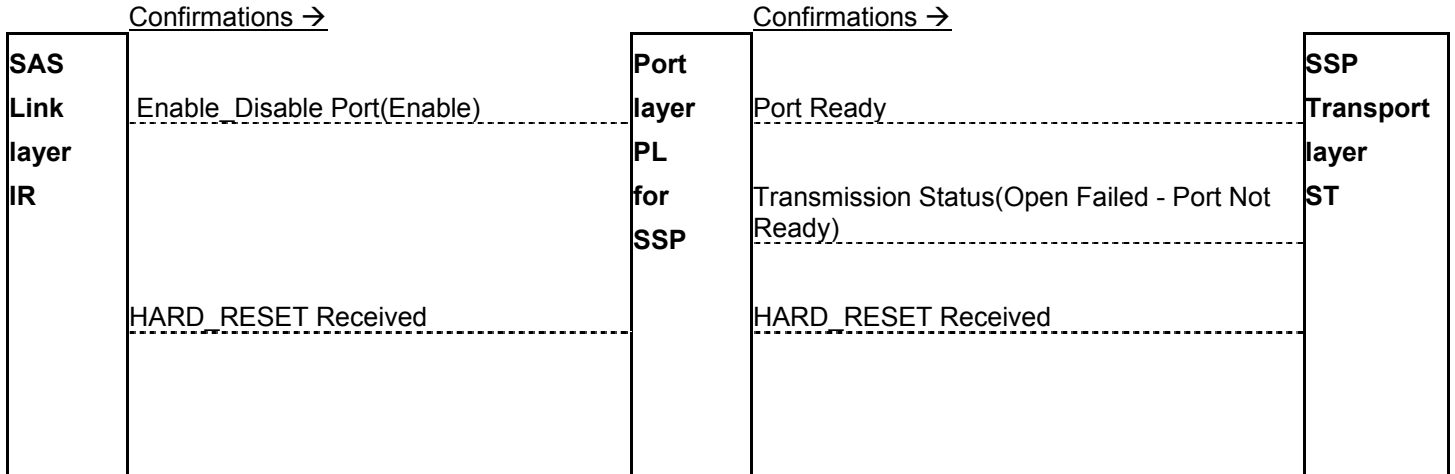
SAS SMP Link layer MP	Tx Frame (SMP)	Port layer PL for SMP	Transmit Frame (SMP)	SMP Transport layer MT
	SMP Transmit Break		SMP Transmit Break	
	Accept_Reject Opens (Accept)		Accept_Reject Opens (Accept)	
	Accept_Reject Opens (Reject)		Accept_Reject Opens (Reject)	

← Requests

T10 02 – 276r2 SAS Combined Request-Confirmation List

Confirmations →		Confirmations →		
SAS SMP Link layer MP	Frame Transmitted	Port layer PL for SMP	Transmission Status (Frame Transmitted)	SMP Transport layer MT
	Frame Received (SMP)		Frame Received SMP	
	Frame Received (SMP Failure)		Frame Received (SMP Failure)	
	Connection Closed (Close Timeout)		Connection Closed (Close Timeout)	
	Connection Closed (Break Received)		Connection Closed (Break Received)	
	Connection Closed (Link Broken)		Connection Closed (Link Broken)	
	Open Failed (Wrong Destination)		Transmission Status (Open Failed - Wrong Destination)	
	Open Failed (Link Rate Not Supported)		Transmission Status (Open Failed - Link Rate Not Supported)	
	Open Failed (Protocol Not Supported)		Transmission Status (Open Failed - Protocol Not Supported)	
	Open Failed (Retry)			
	Open Failed (Pathway Blocked)			
	Open Failed (No Destination)		Transmission Status (Open Failed - No Destination)	
	Open Failed (Bad Destination)		Transmission Status (Open Failed - Bad Destination)	
	Open Failed (STP Resources Busy)		Transmission Status (Open Failed - STP Resources Busy)	
	Open Failed (Port Layer Request)			
	Open Failed (Open Timeout Occurred)		Transmission Status (Open Failed - Open Timeout Occurred)	
	Open Failed (Break Received)		Transmission Status (Open Failed - Break Received)	
			Transmission Status (Open Failed - I_T Nexus Loss Timeout)	
	Transmission Status (Credit Timeout)			
	Transmission Status (Open Failed - Phy Not Ready)			

T10 02 – 276r2 SAS Combined Request-Confirmation List



T10 02 – 276r2 SAS Combined Request-Confirmation List

DWS

IR

Confirmations →

**SAS
PHY
layer
DWS**

Enable Disable Link Layer (SATA Enable)
Enable Disable Link Layer (SATA Disable)

**SATA
Link
layer**