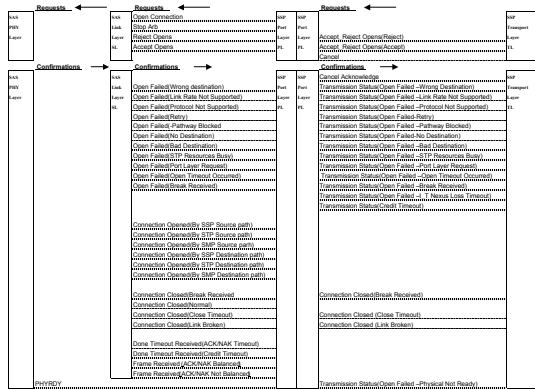
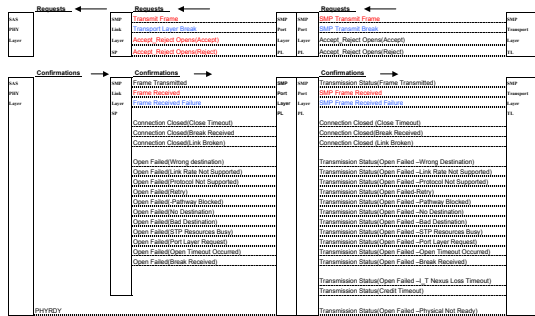
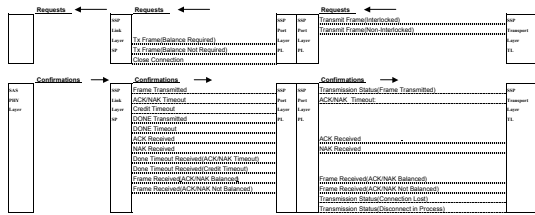


T10 02 - 2760 SAS Combined Request-Confirmation List



is also a Open Timeout



Physical Layer to Link/Port Layer Communications

S&P phy send  
 Rty Status: RNFIDY  
 Phy Status: Closed/Link/Signal/Clr  
 Device Dync Status: Receive Input Invalid  
 Device Dync Status: Receive Input Invalid

Just the port will send confirmation to the transport layer. On receive frames just send to the transport layer

on which link layer we send it on (SSP, SSP, STY)